

Developing our South East London Integrated Care System

**Andrew Eyres,
Strategic Director Integrated Health and Care
18 November 2020**

Context

- **OHSEL governance since 2016, SEL awarded ICS status in June 2019, Richard Douglas appointed as ICS Chair and review initiated pre-Covid-19.**
- **Temporary operating model through the pandemic since April 2020, led through SEL ICS Recovery Board with 50:50 NHS/LA membership.**
- **Engagement across SE London partners from Sept 2020 to shape new fit-for-purpose governance and operating model**
- **Live from end of 2020, but will remain subject to iteration and review**

ICS Role and Design Principles

Role

- **Shared leadership through the ICS, Local Care Partnerships and Provider Collaboratives to;**
 - **Prioritise and coordinate shared transformation activities**
 - **Collective management of system performance**

Design Principles

- **Subsidiarity, with ‘Place’ as the building block**
- **Representative and inclusive interaction**
- **Political and clinical leadership voice**
- **Recognise the key role of major providers both within Place arrangements and at System**
- **Effective and efficient – avoid duplication, maximise and share capability**

Key Features of new approach

- **Proposal for more formalised collective responsibility with focus on both ‘System’ (SEL) and ‘Place’ (borough)**
- **Remains a partnership of sovereign bodies**
- **Recognises joint working at ‘Place’ through six Borough-based Local Care Partnerships**
- **Greater prominence for local government and enhanced joint/integrated leadership at borough**
- **Collaborative working across System, including through provider collaborative networks**



Lambeth together

Governance

ICS Partnership Board , supported by

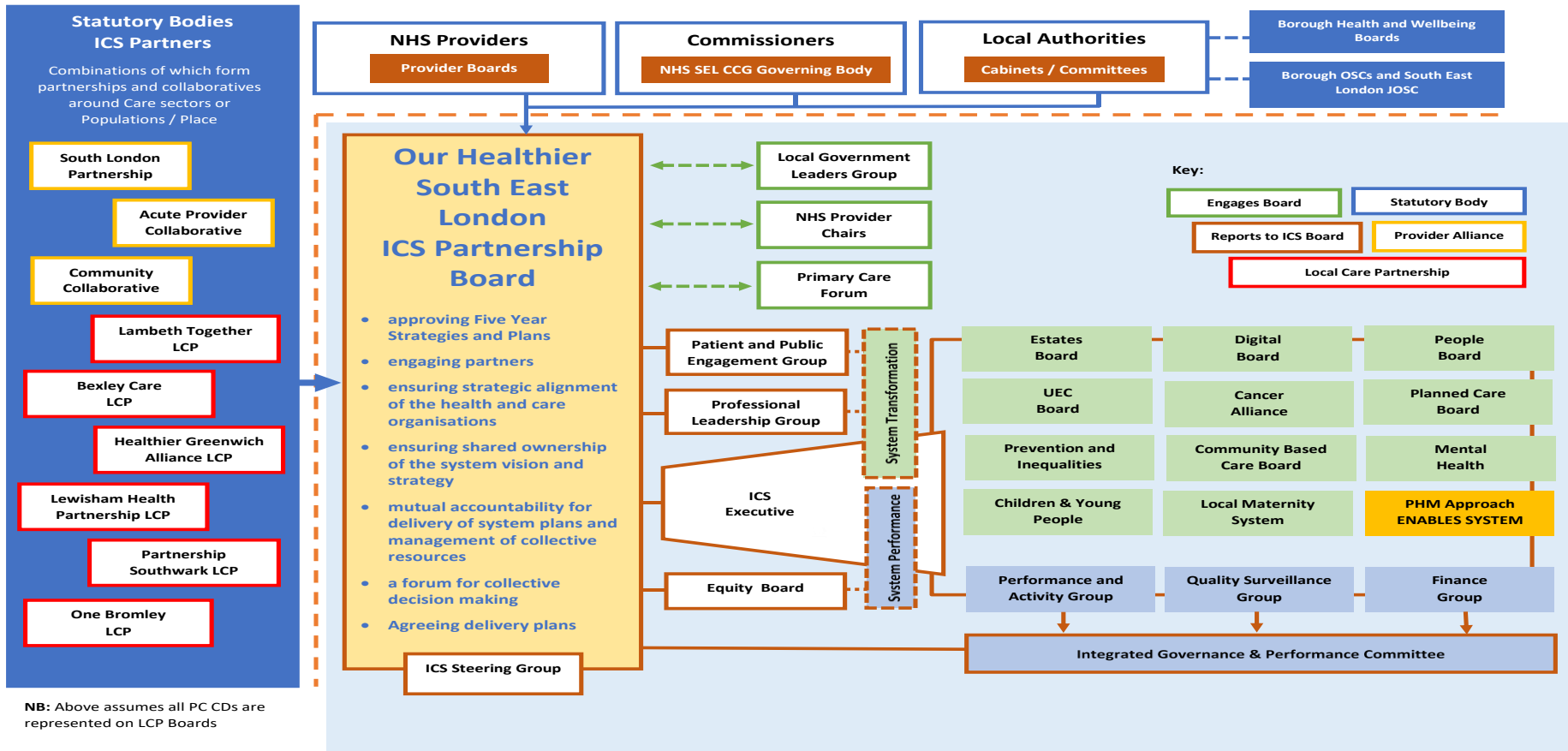
- **ICS Executive**
- **Professional Leadership Group**
- **Patient and Public Engagement Group**
- **Equity Board**
- **Integrated Governance and Performance**
- **Patient and Public Engagement Board**
- **System Transformation Boards**

Plus standing leadership fora, inc Council Leaders, Primary Care Forum, Provider Chairs



Governance Map

Our Healthier South East London Integrated Care System Governance - Map



ICS Partnership Board

Membership

- ICS Chair – Chairs
- Local Government Leaders X6
- NHS Provider Chairs x 4
- Acute Provider Collaborative CEO Lead
- Primary Care Leadership Group Chair
- ICS Lead
- Local Care Partnership lead x6*
- Mental Health / Community CEO Lead
- Professional Leadership Group Chair

22 Members

Meets quarterly

*With aim of identifying leads that bring wider sectoral representation

Co-production & Engagement

Lambeth

