

EASY READ ENGAGEMENT DOCUMENT: WARD IN THE COMMUNITY

Improving Inpatient Mental Health Services

Public engagement on proposals to improve adult inpatient
(hospital) mental health services at Ward In The Community.

Engagement runs from 4 May 2020 – 14 June 2020



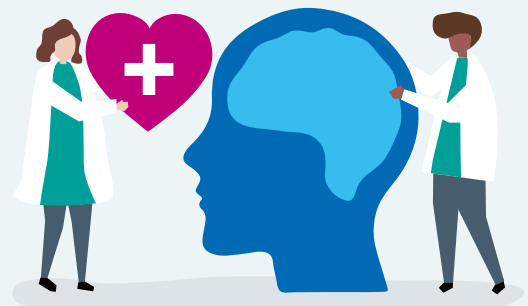
**There is a hospital
on Landor Road in
Lambeth.**



**In that hospital there
is a ward called Ward
In The Community.**



**This is a place for men
who are mentally
unwell.**



**People can stay there
if they need help.
There are 13 beds.**



The building is old, dark and not very comfortable. The bedrooms are small.



People told us it is not a nice place to stay.



We have a new place to move to. This is at the Bethlem Royal Hospital, in Bromley.



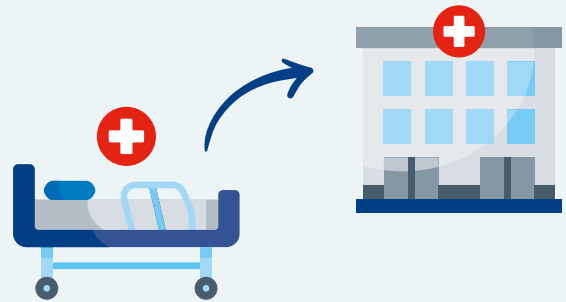
The new place is modern, spacious and safe, with a beautiful big garden.



Tell us what you think.



Is it a good plan to move the 13 beds in Ward In The Community to the Bethlem Royal Hospital?



Tick a face.



Thank you for telling us.

