

EASY READ ENGAGEMENT DOCUMENT: TONY HILLIS UNIT

Improving Inpatient Mental Health Services for Lambeth

Public engagement on proposals to improve adult inpatient
(hospital) mental health services at the Tony Hillis Unit.

Engagement runs from 4 May 2020 – 14 June 2020



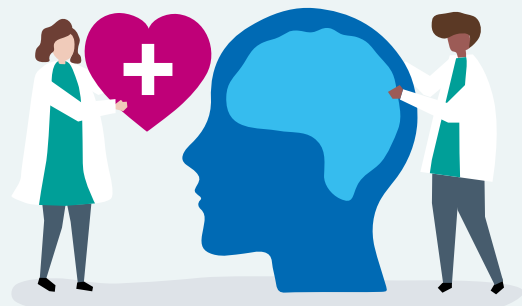
**There is a hospital
on Landor Road in
Lambeth.**



**In that hospital there
is a ward called the
Tony Hillis Unit.**



**This is a place for
men who are
mentally unwell.**



**People can stay there
if they need help.
There are 15 beds.**



The building is old, dark and not very safe. The bedrooms are small.



People told us it is not a nice place to stay.



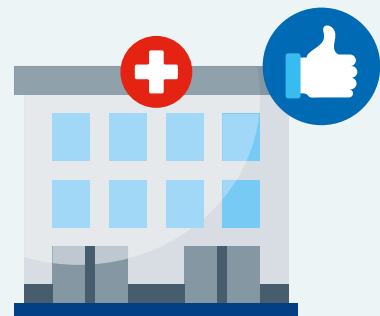
We want to build a new building for people to stay in.



We have a place for a new building. This is at the Maudsley Hospital, in Southwark, only three miles away.



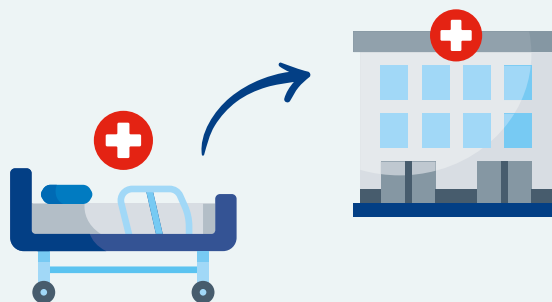
We want the new building to be a nice place to stay, with lots of space.



Tell us what you think.



Is it a good plan to move the 15 beds in the Tony Hillis Unit to the new building?



Tick a face.



Thank you for telling us.

